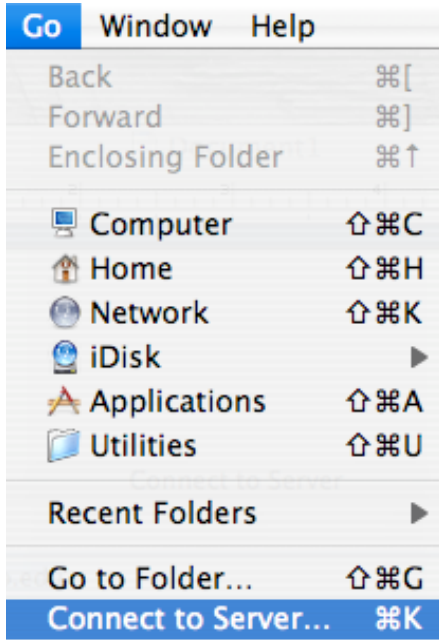
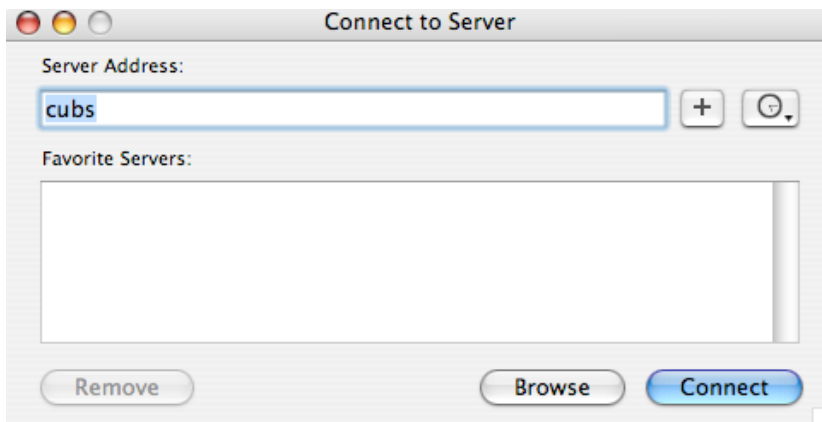


Attaching to the Student Server

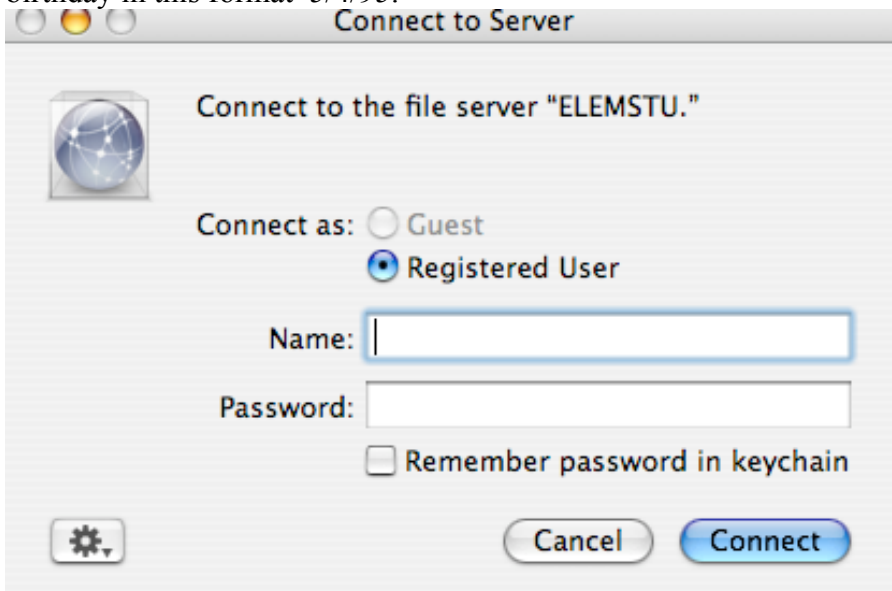
Step1- Click on the Go menu at the top of your computer then down to Connect to Server. Or use the apple + K keys.



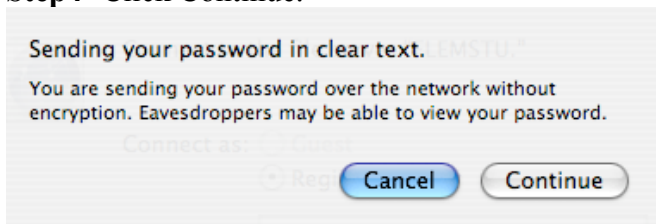
Step2- Enter your school's mascot then click connect: aviators, cubs, eagles, feagles, falcons, grizzlies, cougars, roadrunners, hawks, dragons, Indians, satches, wildcats.



Step3- Enter your login name and password and click connect. Student user name is the first initial of their first and last name plus their student number (If the student number is less than 6 numbers add zeros to the front of the number to make 6). Password is their birthday in this format 5/4/95.



Step4- Click Continue.



Step5- Select your school's volume and click connect.

From here on out things should look the same as before the move to the new server.

