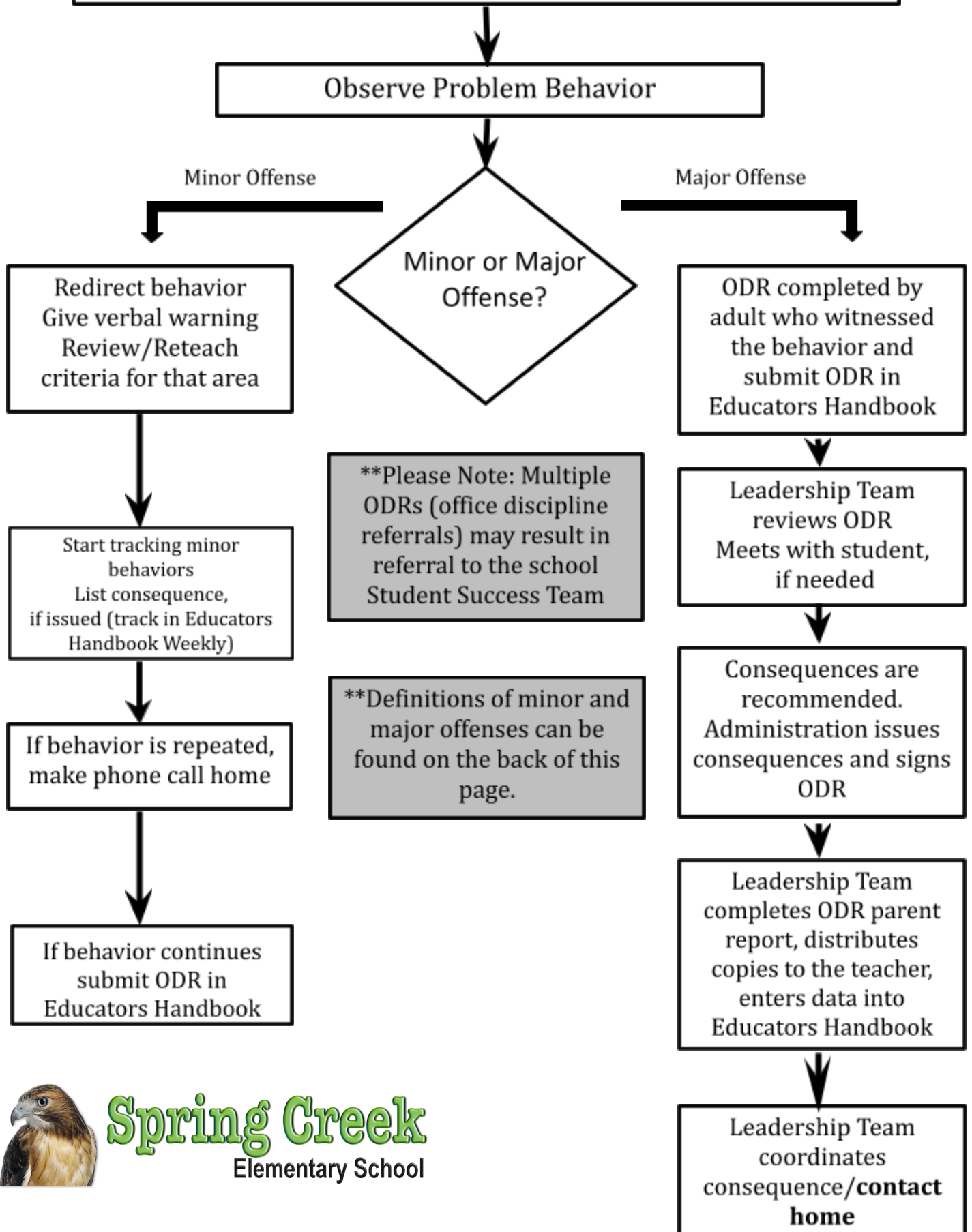


Spring Creek Elementary Behavior Flow Chart



Spring Creek Elementary School Behavior Definitions

Minor Problem Behaviors

Minor Behavior	Definition
Defiance	Student engages in brief or low-intensity failure to obey a request. (Disrespect/Non-compliance)
Inappropriate Lang\profanity	Student engages in low intensity instance of inappropriate language.
Physical Contact	Student engages in non-serious, but inappropriate physical contact.
Property Misuse	Student engages in low-intensity misuse of property.
Technology Misuse	Student engages in non-serious but inappropriate use of cell phone, pager, music/video players, camera, and/or computer. (Cell phones must stay in backpacks. Personal music/video players are not allowed in school unless pre-approved by the teacher.)
Disruption	Student engages in low-intensity, but inappropriate disruption to instruction.
Other	Student engages in any other minor problem behaviors that do not fall within this list.

Major Problem Behaviors

Major Behavior	Definition
Defiance or Disruption	Repeated (Approximately 3-5 times a day for 3-5 days) or high intensity refusal to follow directions, talking back and/or socially rude interactions or interruption of instruction.
Abusive Lang/profanity	Repeated verbal/high-intensity messages that include swearing, name calling or use of words in an inappropriate way.
Fighting/physical aggression	Physical conflict between two or more individuals. Actions involving serious physical contact where injury may occur (e.g. hitting, punching, hitting with an object, kicking, hair pulling, scratching, etc.). Consideration of intent is important.
Vandalism/Prop Damg	Intentionally damaging, defacing, or destroying the property of others.
Technology Violation	Student engages in inappropriate use of cell phone, smart watch, music/video players, camera, and/or computer.
Arson	The act of knowingly, by means of fire or explosive, damaging a building and/or the personal property of others.
Bomb Threat/False Alarm	Student delivers a message of possible explosive materials being on-campus, near campus, near campus, and/or pending explosion.
Use/Possession of Combustibles	Student is in possession of substances/objects readily capable of causing bodily harm and/or property damage (matches, lighters, firecrackers, gasoline, lighter fluid).
Forgery/Theft	Obtain or exercise unauthorized control over the property of another person. Student is in possession of, having passed on, or being responsible for removing someone else's property or has signed a person's name without that person's permission.
Harassment/Bullying	Student delivers disrespectful messages intended to cause harm or distress in a relationship in which there is an imbalance of power, and may be repeated over time.
Out of bounds area	Student is in an area that is outside of school boundaries.
Use/Possession of Alcohol, Tobacco, Drugs	Student is in possession of or is using alcohol, drugs or tobacco on school grounds.
Use/Possession of Weapons	Student is in possession of knives or guns (real or look alike), or other objects readily capable of causing bodily harm.
Other Behavior	Problem behavior causing this referral is not listed above. Staff using this area will specify the problem behavior observed.

Note: If student behavior disrupts the teaching and learning within a classroom to the point the teacher can not teach, a student may be referred to the office for behavior support immediately.